



January 03, 2025

John C. Wagner, PhD
 Director, Idaho National Laboratory
 john.wagner@inl.gov

Idaho National Laboratory –
 Creating a Secure, Resilient, Competitive Energy Future
*State of Idaho Economic Outlook and Revenue Assessment Committee
 Boise, Idaho*

Battelle Energy Alliance manages INL for the
 U.S. Department of Energy's Office of Nuclear Energy | **INL** Idaho National Laboratory

1

Enabling energy dominance and security through research, development, and demonstration



VISION

To change the world's energy future and secure our nation's critical infrastructure.

MISSION

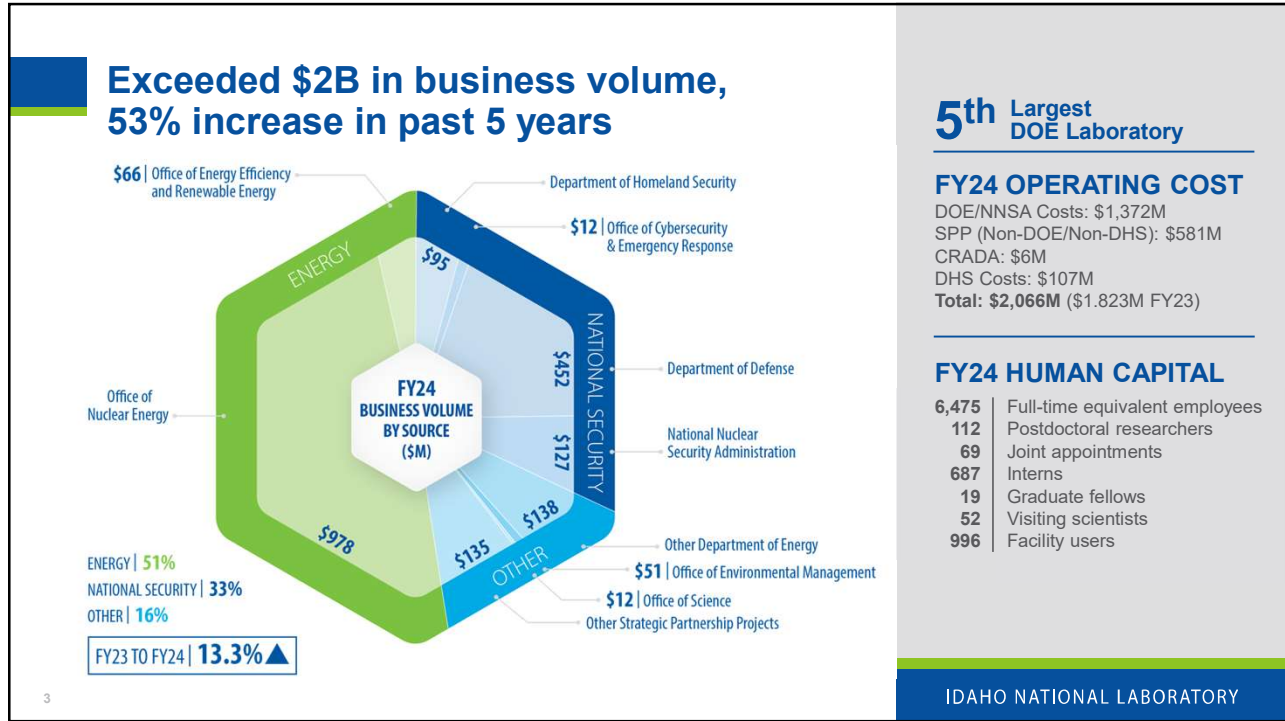
To discover, demonstrate and secure innovative nuclear energy solutions, other clean energy options and critical infrastructure.

VALUES

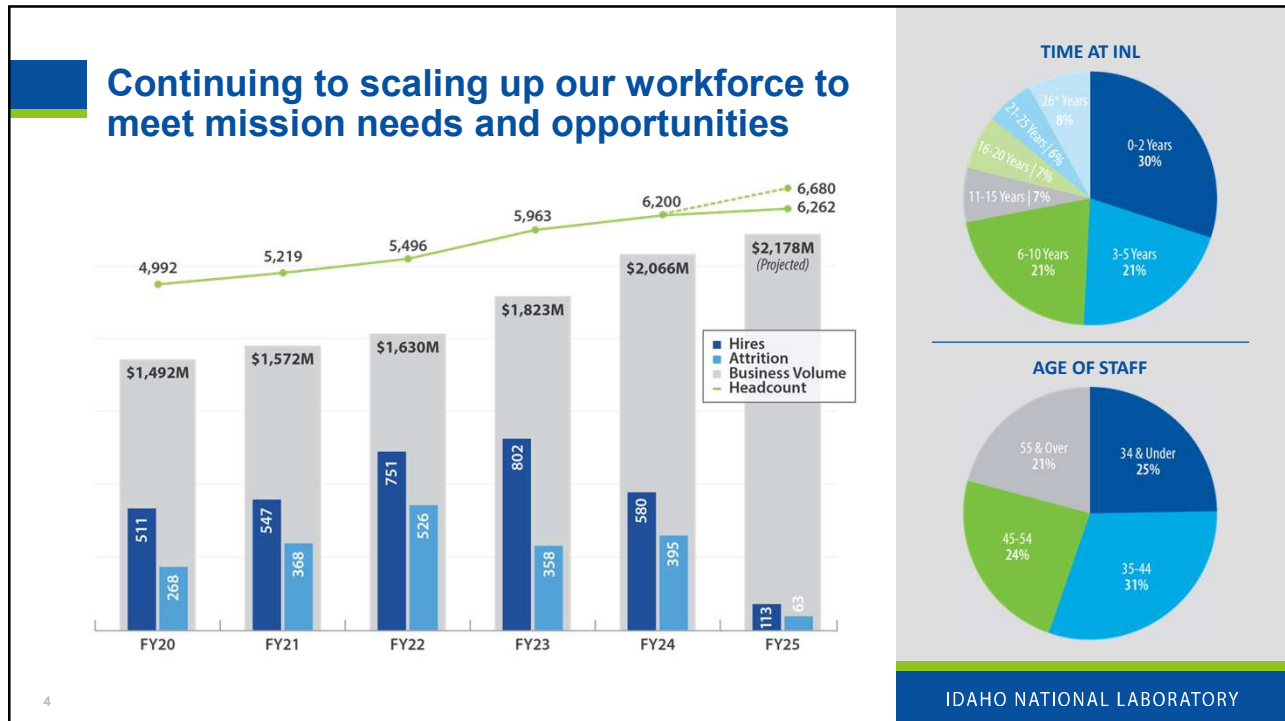
Excellence, Inclusivity, Integrity, Ownership, Teamwork, Safety

IDAHO NATIONAL LABORATORY

2

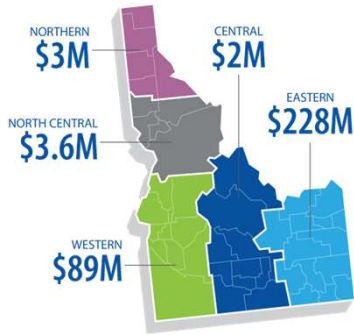


3



4

INL's FY24 economic impact on the State of Idaho was \$4.29B, 13.8% increase from FY23



\$4.29 Billion total economic impact



For every **ONE** INL job, another **TWO** jobs are created in other industries.



Idaho's **5th** largest public and private employer



More than **12,600** other Idaho jobs depend on INL operations



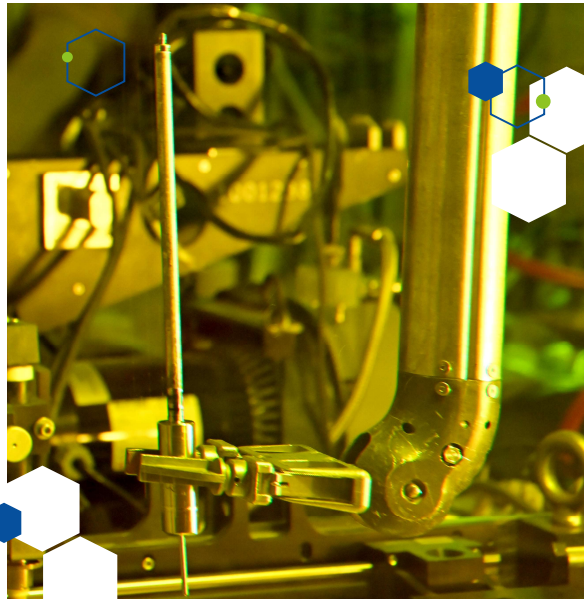
\$326M in subcontracts to Idahoan companies (\$448M with small businesses)



Average Salary (all staff) **\$125k**

Acquisitions • Supplier diversity • Technology deployment

5



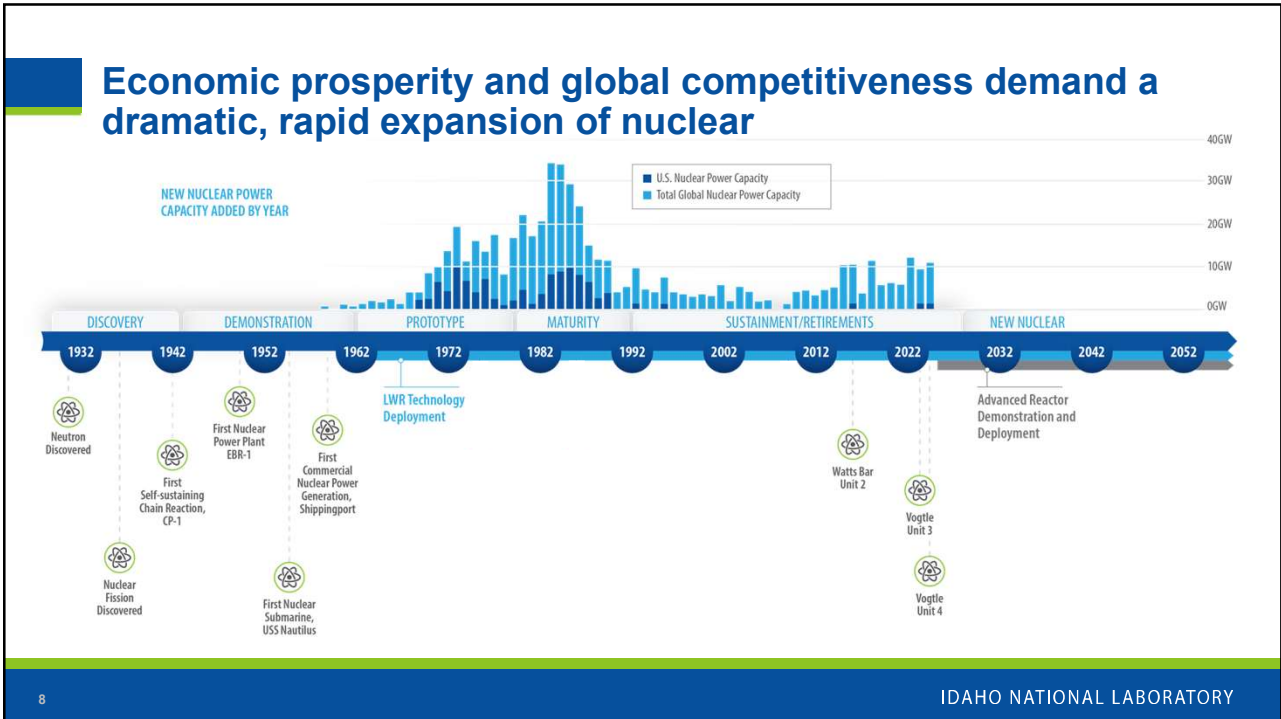
6



7

IDAHO NATIONAL LABORATORY

7



8

IDAHO NATIONAL LABORATORY

8



9



10



Russian Uranium Ban Unlocks **\$2.7B** for LEU an HALEU Production

11

IDAHO NATIONAL LABORATORY

This slide features a background image of bright yellow, chunky uranium ore. A semi-transparent white hexagonal callout box is centered over the image, containing the text 'Russian Uranium Ban Unlocks \$2.7B for LEU an HALEU Production'. The text is in blue, with '\$2.7B' in a larger, bold font. The callout box is connected to the background by blue lines and small green and blue hexagonal markers.

11



Microsoft Power Purchase Agreement enables the Launch of **Crane Clean Energy Center**

12

IDAHO NATIONAL LABORATORY

This slide features a background image of a nuclear power plant with several large, grey cooling towers emitting thick white steam. The plant is situated near a body of water under a clear blue sky. A semi-transparent white hexagonal callout box is positioned on the left side of the image, containing the text 'Microsoft Power Purchase Agreement enables the Launch of Crane Clean Energy Center'. The text is in blue, with 'Crane Clean Energy Center' in a larger, bold font. The callout box is connected to the background by blue lines and small green and blue hexagonal markers.

12

Oracle Plans to Use 3 SMRs to Power a Gigawatt-Scale Data Center

13

IDAHO NATIONAL LABORATORY

13

14 Major Global Banks and Financial Institutions Pledge Support for Nuclear Power

Logos included: ADCB, BANK OF AMERICA, Goldman Sachs, CRÉDIT AGRICOLE CORPORATE & INVESTMENT BANK, ARES, BNP PARIBAS, Morgan Stanley, Brookfield, citi, SOCIETE GENERALE, SEGRA CAPITAL MANAGEMENT, BARCLAYS, Rothschild & Co.

14

IDAHO NATIONAL LABORATORY

14

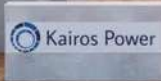


Poland
Announces
\$16B Investment
in its First
Nuclear Plant

15



Partnership
between Google
and Kairos Will
Enable up
to **500 MW**
of SMRs



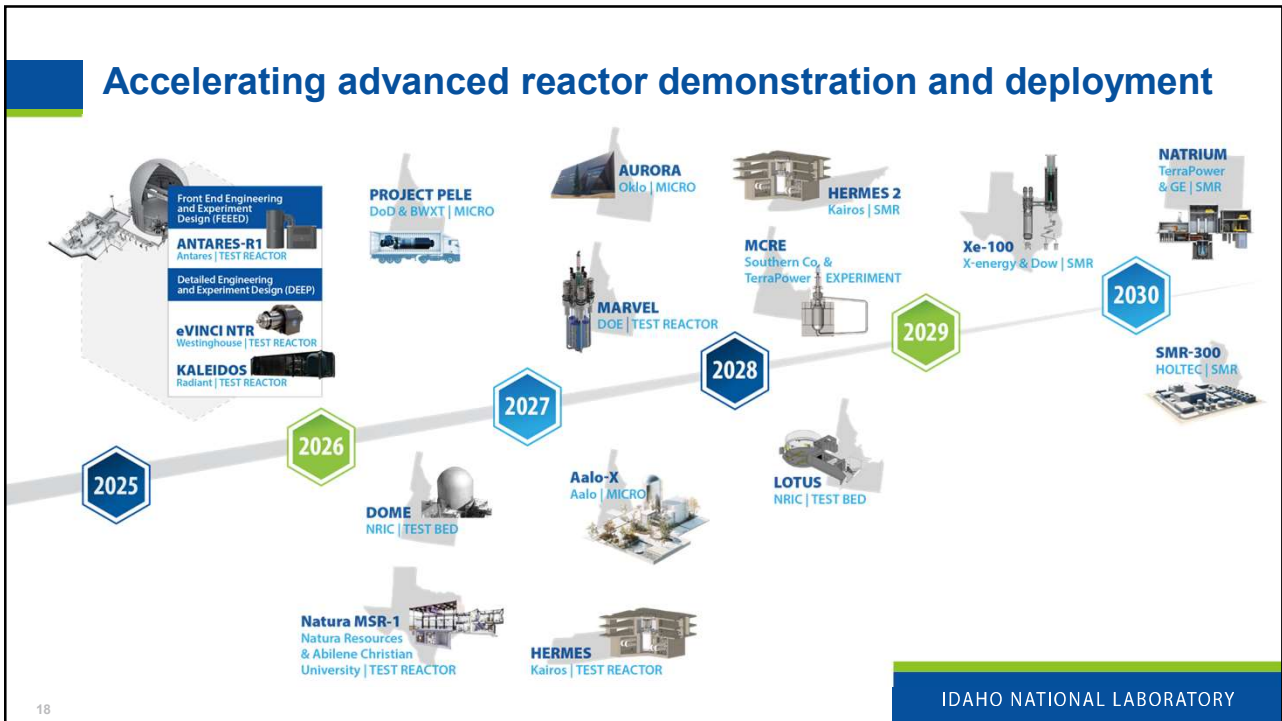
16



17

IDAHO NATIONAL LABORATORY

17



18

IDAHO NATIONAL LABORATORY

18



19

INL
Idaho National Laboratory

Battelle Energy Alliance manages INL for the U.S. Department of Energy's Office of Nuclear Energy. INL is the nation's center for nuclear energy research and development, and also performs research in each of DOE's strategic goal areas: energy, national security, science and the environment.

WWW.INL.GOV

20